



License No. 800025015
FL License # CMTL-0003
CLIA No. 10D1094068

Certificate of Analysis

Compliance Test

BEYOND BOTANICALS LLC
115 HURLEY RD #8
OXFORD, CT 06478

Batch # 010IS2103
Batch Date: 2021-04-06
Extracted From: Hemp - CO2

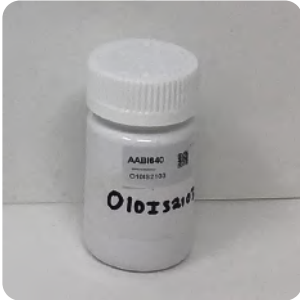
Test Reg State: Florida

Order # BEY210513-060024
Order Date: 2021-05-13
Sample # AABI640

Sampling Date: 2021-05-18
Lab Batch Date: 2021-05-18
Completion Date: 2021-05-25

Initial Gross Weight: 36.364 g
Net Weight: 18.009 g

Number of Units: 1
Net Weight per Unit: 3601.800 mg



Product Image

Potency
Tested

Potency - 11

Specimen Weight: 1520.000 mg

Tested
(HPLC/LCMS)

Potency Summary

Total THC None Detected	Total CBD 0.408% 14.695mg
Total CBG None Detected	Total CBN None Detected
Other Cannabinoids 0.003% 0.108mg	Total Cannabinoids 0.414% 14.911mg

Pieces For Panel: 5

Analyte	Dilution (1:n)	LOD (%)	LOQ (%)	Result (mg/g)	(%)
CBD	1000.000	0.000054	0.001	4.080	0.408
CBDV	1000.000	0.000065	0.001	0.030	0.003
CBN	1000.000	0.000014	0.001	0.010	0.001
Delta-8 THC	1000.000	0.000026	0.001	0.010	0.001
Delta-9 THC	1000.000	0.000013	0.001	0.010	0.001
CBC	1000.000	0.000018	0.001	<LOQ	
THCV	1000.000	0.000007	0.001	<LOQ	
CBGA	1000.000	0.00008	0.001	<LOQ	
CBG	1000.000	0.000248	0.001	<LOQ	
CBDA	1000.000	0.00001	0.001	<LOQ	
THCA-A	1000.000	0.000032	0.001	<LOQ	

Xueli Gao
Ph.D., DABT
Lab Toxicologist

Aixia Sun
D.H.Sc., M.Sc., B.Sc., MT (AAB)
Lab Director/Principal Scientist



Definitions and Abbreviations used in this report: *Total CBD = CBD + (CBD-A * 0.877), *Total THC = THCA-A * 0.877 + Delta 9 THC, *CBG Total = (CBGA * 0.877) + CBG, *CBN Total = (CBNA * 0.877) + CBN, *Other Cannabinoids Total = CBC + CBDV + THCV + THCV-A, *Total Detected Cannabinoids = CBD Total + CBG Total + CBN Total + THC Total + CBC + CBDV + THCV + THCV-A, *Analyte Details above show the Dry Weight Concentrations unless specified as 12% moisture concentration. (mg/ml) = Milligrams per Milliliter, LOQ = Limit of Quantitation, LOD = Limit of Detection, Dilution = Dilution Factor (ppb) = Parts per Billion, (%) = Percent, (cfu/g) = Colony Forming Unit per Gram (cfu/g) = Colony Forming Unit per Gram, , LOD = Limit of Detection, (µg/g) = Microgram per Gram (ppm) = Parts per Million, (ppm) = (µg/g), (aw) = aw (area ratio) = Area Ratio, (mg/Kg) = Milligram per Kilogram, *Measurement of Uncertainty = +/- 5%



This report shall not be reproduced, without written approval, from ACS Laboratory. The results of this report relate only to the material or product analyzed. Test results are confidential unless explicitly waived otherwise. Accredited by a third-party accrediting body as a competent testing laboratory pursuant to ISO/IEC 17025 of the International Organization for Standardization.